

Doncaster Multi-agency COVID-19 Control Plan Public Summary Document

Plan Authors: Doncaster COVID Control Board

Version: 8.1 (draft)

Issued: March 2021

Review date: April 2021

The previous Version (version 7) of the Operational Covid Control Plan was signed off by both the COVID Control Board and COVID Oversight Board.

This is a summarised, public version of the plan document.

Public Summary Document

Table of Contents

SECTION 1: PLAN MAINTENANCE	4
1.1 Document control and Distribution	4
1.2 Record of Amendments	4
1.3 Review and Exercise Record	4
SECTION 2: GENERAL INFORMATION	4
2.1 Introduction and Background	4
2.2 Purpose of the plan	5
2.2.1 Aims	5
2.2.2 Objectives	5
2.2.3 Scope and plan limitations	6
2.3 Risk Assessments	6
2.4 Related documents and supporting plans	7
2.5 Audience and responding organisations	7
SECTION 3: ACTIONS, ROLES AND RESPONSIBILITIES	8
SECTION 4: PLAN ACTIVATION AND COVID-19 TASK FORCE	9
4.1 COVID-19 Task Force	9
4.2 Alert mechanisms and process flow	9
4.3 Governance and reporting	11
4.3.1 Structure	11
4.3.2 Doncaster COVID-19 Oversight Board	11
4.5.3 Doncaster COVID-19 Control Board	12
SECTION 5: DATA AND INTELLIGENCE	12
5.1 Data protection and data sharing	12
5.2 Local data requirements, Data flows and availability	12
5.3 National and Regional Notifications and Intelligence	13
5.4 Local Notifications and Intelligence	13
5.5 Local Data Flow and Approach	13
SECTION 6: VULNERABLE PEOPLE, PLACES AND SETTINGS AND HEALTH INEQUALITIES	14
6.1 Health Inequalities	14
6.1.1 COVID community link team	15
6.2 Identification and support for vulnerable people	15
6.2.1 Enabling and supporting self-isolation	15
6.2.2 Tailoring and targeting communications	16
SECTION 7: OUTBREAK MANAGEMENT PROTOCOLS	16

7.1 Yorkshire and the Humber PHE and LA Joint Working Arrangements for local responses to COVID-19 for specific settings	17
7.2 National Action Cards	17
7.3 Local Outbreak Planning and Response Framework	17
7.3 Incident and Outbreak Monitoring and Escalation	18
7.3.1 Local outbreak monitoring and escalation	18
7.3.2 Criteria for escalation to IMT	19
7.4 Local outbreak management close down criteria and actions	19
SECTION 8: NATIONAL RESTRICTIONS AND ROADMAP IMPLICATIONS	20
8.1 Roadmap overview	20
8.2 Local response to roadmap	21
8.3 Covid-safe reopening	21
8.4 Health Protection (Coronavirus, Restrictions) (England) (No.3) Regulations 2020	22
8.5 National Guidance updates	22
SECTION 9: ENDURING TRANSMISSION AND ‘LIVING WITH COVID’	22
9.1 Enduring transmission – social networks	23
SECTION 10: VARIANTS OF CONCERN AND SURGE CAPACITY	25
SECTION 11: CONTACT TRACING	25
11.1 What is contact tracing?	25
11.2 Definition of ‘a contact’	25
11.3 Contacts who are health and care staff	26
11.4 NHS Test and Trace Programme	26
11.5 Local contact tracing	26
11.6 Local resource and training	27
11.7 Monitoring effectiveness	27
SECTION 12: TESTING FOR COVID-19	28
12.1 Testing overview	28
12.2 Testing strategy objectives	30
12.3 Communication and engagement for local testing options	30
12.4 Increasing capacity and utilisation	31
SECTION 13: VACCINATION	31
13.1 Vaccination programme overview	31
SECTION 14: COMMUNICATIONS AND ENGAGEMENT	31
SECTION 15: RESOURCES	32

SECTION 1: PLAN MAINTENANCE

1.1 Document control and Distribution

This plan is maintained and updated by members of the Doncaster COVID Control Board chaired by the Director of Public Health.

All members of the group are asked to advise the team of any changes to circumstances, staffing or procedure that may materially affect the plan in any way.

1.2 Record of Amendments

Amendment number	Actioned by	Type of change	Date
1	COVID control board	Initial plan draft	June 2020
2	COVID control board	V2 draft developments	June 2020
3	R Suckling	V3 Update to plan	12 July 2020
4	C Williams	V4 update to plan – all sections	31 July 2020
5	C Williams	V5 update to plan	September 2020
6	C Williams	V6 update to plan	November 2020
7	C Williams	V7 update to plan	January 2021
8	C Williams	V8 update to plan	March 21
9	R Suckling	Section 9.0	April 2021

1.3 Review and Exercise Record

The operational plan is under regular review including following any significant changes in national guidance and incorporates learning from local incidents and outbreaks.

A range of training has taken place across the system and training needs are reviewed on a regular basis.

SECTION 2: GENERAL INFORMATION

2.1 Introduction and Background

This plan provides a framework for the multi-agency prevention and management of cases, clusters and outbreaks of COVID-19 in Doncaster. It also outlines the links to regional and national systems and guidance.

In May 2020, Directors of public health were mandated to develop local COVID-19 outbreak management plans with local partners that are centred around 7 themes:

Public Summary Document

1. Planning for local outbreaks in care homes and schools
2. Identifying and planning how to manage other high-risk places, locations and communities of interest including sheltered housing, dormitories for migrant workers, transport access points (e.g. ports, airports), detained settings, rough sleepers
3. Identifying methods for local testing to ensure a swift response that is accessible to the entire population. This could include delivering tests to isolated individuals, establishing local pop-up sites or hosting mobile testing units at high-risk locations
4. Assessing local and regional contact tracing and infection control capability in complex settings (e.g. Tier 1b) and the need for mutual aid
5. Integrating national and local data and scenario planning through the Joint Biosecurity Centre Playbook
6. Supporting vulnerable local people to get help to self-isolate and ensuring services meet the needs of diverse communities
7. Establishing governance structures led by existing COVID-19 Health Protection Boards and supported by existing Gold command forums and a new member-led Board to communicate with the general public.

2.2 Purpose of the plan

The purpose this plan is to provide a framework for the multi-agency prevention and management of cases, clusters and outbreaks of COVID-19 in Doncaster and an outline of the links with regional and national systems and guidance.

2.2.1 Aims

The aims of this plan are:

- To minimise the spread of COVID-19
- To identify any new cases, clusters or outbreaks of COVID-19
- To respond promptly to any new cases, clusters or outbreaks of COVID-19
- To reduce the impact of any new cases, clusters or outbreaks of COVID-19
- To build public confidence in the local approach to COVID-19 control

2.2.2 Objectives

The key objectives of this plan are:

- To summarise the key risks, planning assumptions and considerations that underpin the planning and response arrangements to local outbreaks of COVID-19;
- To define the roles and responsibilities of responding organisations;
- To describe the approach to preventing local cases, clusters or outbreaks of COVID-19;
- To outline the procedure for managing and responding to COVID-19 cases, clusters and outbreaks in single settings and/or institutions e.g. schools and care homes;
- To outline the procedures for identifying and managing COVID-19 cases, clusters and outbreaks in high risk places, locations and communities of interest;
- To outline the local and regional contact tracing capability and process in complex settings, and interfaces with national systems and programmes;
- To summarise the process and coordination of support for vulnerable people needing help to self-isolate;

- To outline local methods and access routes to timely testing and interfaces with national systems;
- To provide an overview of national and local data, intelligence and surveillance flows and role of the Joint Biosecurity Centre;
- To summarise the governance structures for the management and response to localised outbreaks of COVID-19 in Doncaster.

2.2.3 Scope and plan limitations

This plan outlines the key responsibilities of responding organisations, setting specific protocols and key considerations to managing cases, clusters and outbreaks of COVID-19 in Doncaster.



This plan does not cover in depth detail of the national NHS Test and Trace programme, but does outline the Council's approach to contact tracing and support locally. It also does not provide in depth detail for Port Health or outbreaks in institutions such as prisons; there are separate and dedicated plans in place for the management of communicable disease incidents and outbreaks in these settings that are held by Public Health England and partners.

2.3 Risk Assessments

Due to the complex and changing nature of COVID-19, risk assessments for individual roles may need to be undertaken. These will be reviewed on a regular basis throughout the COVID-19 pandemic in line with guidance produced by Human Resources colleagues through the Workforce Cell.

On initial notification of a positive complex COVID-19 case, the Yorkshire and Humber PHE Health Protection Team (HPT) will also undertake a risk assessment based on the information provided to them at that time, as outlined in the Joint Outbreak Management of Outbreaks LA and HPT V1.0.

Higher-risk communities, settings and places are currently being reviewed and will be risk assessed and prioritised.

2.4 Related documents and supporting plans

Key supporting plans are:

- Doncaster multi-agency outbreak plan (Doncaster Joint Health Emergency Planning Group);
- Doncaster multi-agency Mass Treatment Plan (Doncaster Joint Health Emergency Planning group);
- Coronavirus Emergency Preparedness, Resilience and Response Plan;
- Doncaster COVID-19 Recovery and Renewal Plan
- Doncaster Care Home Intervention Plan
- Outbreak Control Plan Equality Impact Assessment

Related and supporting documents for this plan are:

- ADPH Guidance: Public Health Leadership, Multi-Agency Capability: Guiding Principles for Effective Management of COVID-19 at a Local Level;
- ADPH Guidance: Living Safely with Covid: Moving toward a Strategy for Sustainable Exit from the Pandemic
- Joint Outbreak Management of Outbreaks LA and HPT V1.0
- Doncaster Coronavirus Tactical Strategy
- Port Health Plan for Doncaster Sheffield Airport

2.5 Audience and responding organisations

This plan has been developed for use by organisations involved in the management of localised COVID-19 outbreaks in Doncaster. It will assist responding staff and organisations to understand the risk and management of COVID-19 outbreaks and incidents in the Borough. The plan will also refer to actions and arrangements in place to respond to future outbreaks and incidents. Plan holders will receive updated copies following any changes and reviews.

A number of organisations may be involved in the management of a communicable disease incident or outbreak in Doncaster. Depending on the nature and scale of the outbreak, these may include, amongst others:

- Doncaster Council;
- Public Health England;
- St Leger Homes of Doncaster;
- Doncaster Children's Services Trust (DCST);
- Rotherham, Doncaster and South Humber NHS Foundation Trust (RDaSH);
- Doncaster and Bassetlaw Teaching Hospitals Foundation Trust (DBTHFT);
- NHS Doncaster Clinical Commissioning Group (DCCG);
- Yorkshire Ambulance Service (YAS);
- Primary care services;
- FCMS;
- Voluntary sector and community groups;
- Doncaster Culture and Leisure Trust (DCLT);
- South Yorkshire Police;
- South Yorkshire Fire and rescue;
- NHS England.

SECTION 3: ACTIONS, ROLES AND RESPONSIBILITIES

This section outlines the key roles and responsibilities of responding organisations, groups and officers in the management of COVID-19 incidents or outbreaks.

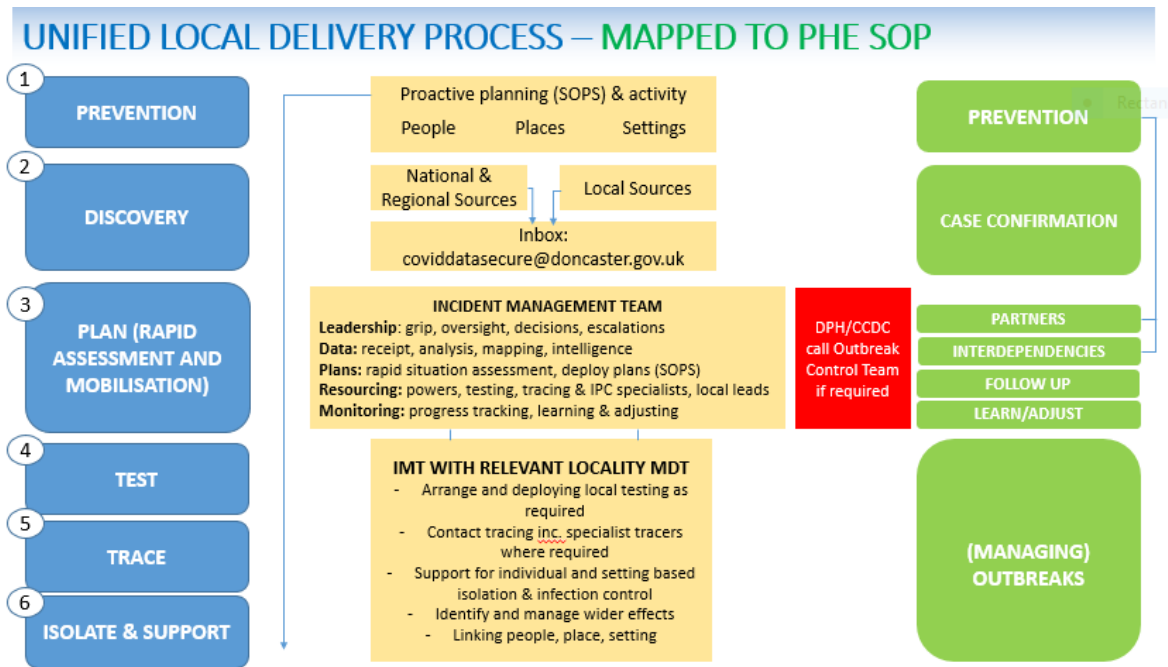
Responding organisation / cell	Role summary
Covid-19 Incident Management Team (multi-agency)	To monitor and review data and intelligence on COVID-19 cases, incidents and outbreaks, and to agree and coordinate the activities of the agencies involved to manage the investigation and control of the outbreak.
Locality Bronze Groups	Undertake key actions agreed with IMT and advise on local intelligence and knowledge of high-risk populations, people and places.
Public Health England Yorkshire and the Humber Health Protection Team	To receive the notification of outbreaks, undertake the risk assessment and provide public health advice in accordance with national guidance or local Standard Operating Procedures. The team will work closely with the Director of Public Health
Director of Public Health and Team	Under the Health and Social Care Act 2012, Directors of Public Health in upper tier and unitary local authorities have a duty to prepare for and lead the local authority public health response to incidents that present a threat to the public's health.
Data cell	To collate, analyse and triangulate all available data to provide a situation overview upon which decisions on prevention work and outbreak control measures are required can be made.
COVID-19 Health Cell	To provide expert leadership across the local health system and will closely support and link to the COVID control board and IMTs through the designated representatives from NHS Doncaster Clinical Commissioning Group.
Infection Prevention and Control Task and Finish Group	To provide specialist advice and guidance on infection prevention and control and assure local arrangements for testing, including access, increasing capacity and data sharing as appropriate.
COVID-19 Testing Lead	The COVID-19 testing lead works closely with the SY LRF testing lead and local partners. This covers all areas of testing from local aspects of pillar 2 through to outbreak testing deployment and symptomatic and asymptomatic testing programmes locally.

SECTION 4: PLAN ACTIVATION AND COVID-19 TASK FORCE

4.1 COVID-19 Task Force

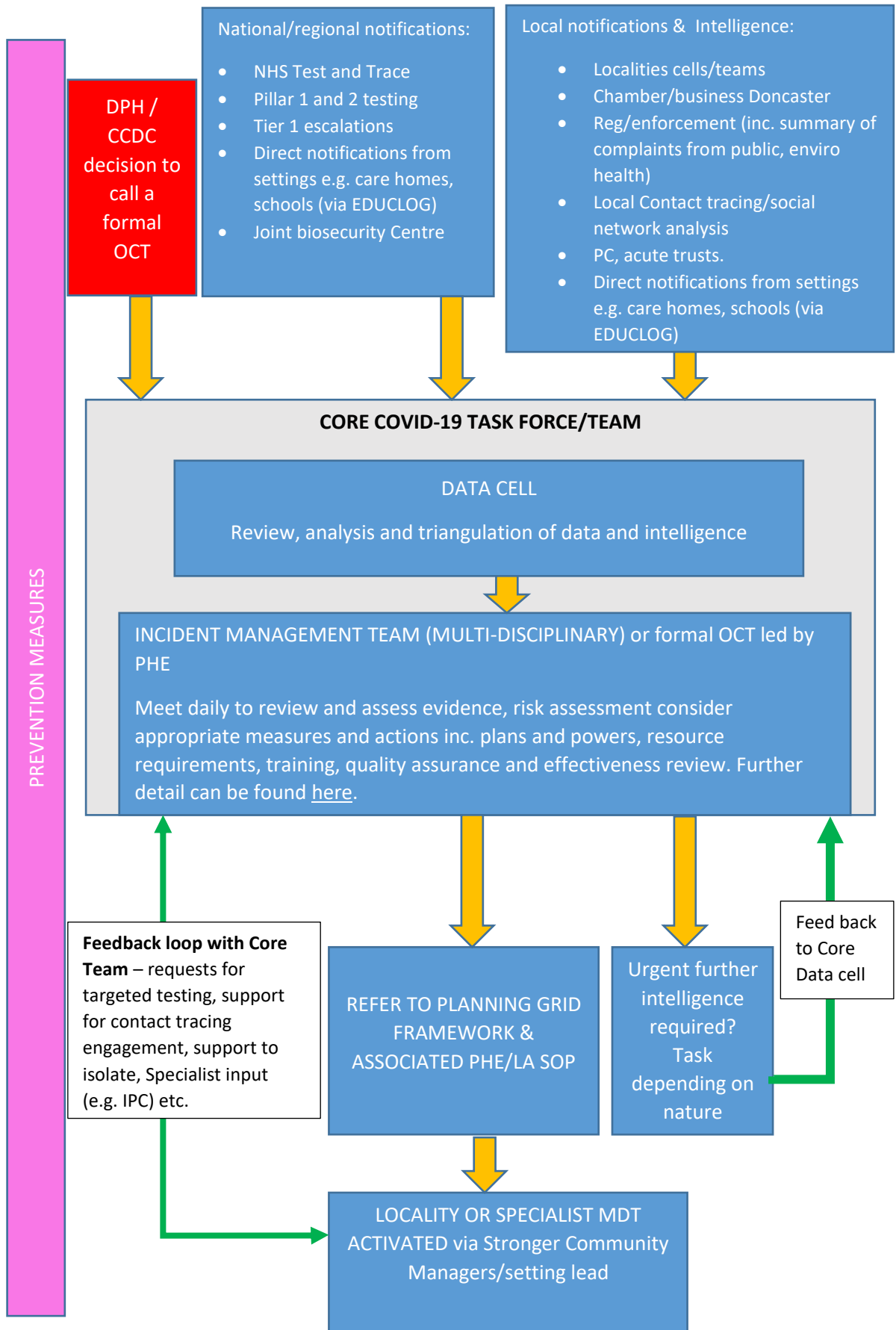
The COVID-19 Task Force will drive the coordination and management of outbreaks of COVID-19 in Doncaster, along with key elements of prevention, risk management, data and intelligence and wider local response. The task force includes a range of Team Doncaster partners.

An overview of the task force response is provided in the diagram below and the following sub-sections of this plan.



4.2 Alert mechanisms and process flow

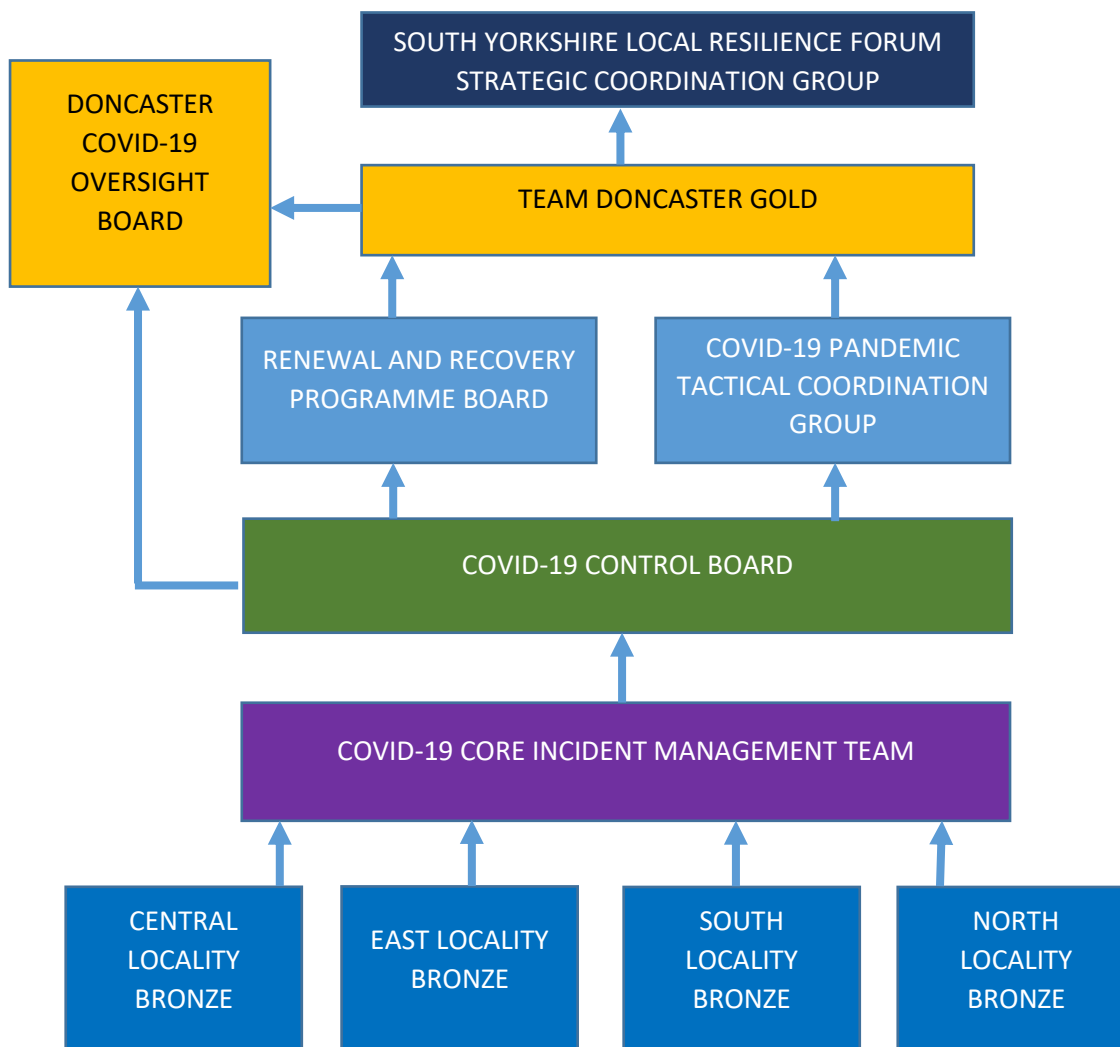
The following diagram briefly outlines the key alert mechanisms and process flow from notification of cases or issues through the core COVID-19 task force and Incident Management Team and activation of locality Multi-Disciplinary Teams and deployment of resources.



4.3 Governance and reporting

4.3.1 Structure

The governance and reporting structure for COVID-19 outbreak management is summarised below.



4.3.2 Doncaster COVID-19 Oversight Board

The role of the Doncaster COVID-19 Oversight board is to:

1. Provide oversight, assurance and scrutiny of:
 - a. Plans to prevent and manage outbreaks of COVID-19 in Doncaster
 - b. Actions taken to prevent and manage outbreaks and their outcomes
2. Engage and communicate with residents and stakeholders
3. Monitor levels of infection and assure the Doncaster people that the Control Plan has been developed and is being delivered appropriately.

Membership of the COVID-19 Oversight Board includes:

- Elected Mayor of Doncaster Council (Chair)
- Cabinet member for Public Health, culture and Leisure (Vice Chair)
- The Group leaders or their nominees
- Locality cabinet members x4 (the cabinet member for public health counts as one)
- Council CEO
- Council DPH
- Health – Doncaster CCG
- Chair Inclusion and Fairness Forum
- Union representatives

4.5.3 Doncaster COVID-19 Control Board

The overall role of the COVID-19 Control Board is to protect the health of the population of Doncaster by preventing, identifying and responding to Outbreaks of COVID-19. This also includes:

- The identification of actions to both prevent and manage outbreaks
- The production of the Control Plan and its continual and agile updating

Membership of the Doncaster COVID-19 Control Board includes partners from across Team Doncaster.

Membership of the COVID control board is subject to regular review.

SECTION 5: DATA AND INTELLIGENCE

5.1 Data protection and data sharing

Data sharing is in line with the conditions set out within the Civil Contingencies Act (2004) and GDPR to ensure systems can effectively respond to COVID-19. Further information on national data sharing notifications can be found here <https://www.gov.uk/government/publications/coronavirus-covid-19-notification-of-data-controllers-to-share-information>.

<https://www.gov.uk/government/publications/coronavirus-covid-19-notification-of-data-controllers-to-share-information>.

Information sharing agreements are also in place with partner organisations to support local response.

5.2 Local data requirements, Data flows and availability

The data cell is responsible for the receipt, review, analysis and triangulation of data and intelligence to aid the Incident Management Team in risk assessment, decision-making, action planning and resource requirement and deployment.

5.3 National and Regional Notifications and Intelligence

There are a number of ways the Director of Public Health may be notified of positive cases in the borough through national and regional routes, including:

- NHS Test and Trace data and exceedance reports
- Pillar 1 and 2 testing
- Tier 1 escalations to YH Health Protection Team
- Joint Biosecurity Centre

5.4 Local Notifications and Intelligence

Local notifications and intelligence may be reported in a number of forms. These may include:

- Localities cells/teams
- Chamber/business Doncaster
- Regulation and enforcement (including summary of complaints from public, environmental health etc.)
- Local Contact tracing/social network analysis
- Primary Care, acute trusts and other health settings
- Direct notifications from settings e.g. care homes, schools (via EDUCLOG), hospitals
- Notifications and enquiries from providers, services and settings via commissioners

5.5 Local Data Flow and Approach

A range of data products will be developed for internal and external use. Wherever possible as much data as possible will be shared with Doncaster people.

A data cell has been working across the Team Doncaster partnership to review, analyse and interpret available data.

Regular surveillance and epidemiology meetings are undertaken which cover data and intelligence to give a solid understanding of the local picture including. This includes intelligence from a range of sources.

Regular line list review meetings are also undertaken which identifies cases that need further contact or welfare calls or support from specific organisations or teams.

Daily Incident Management team meetings take place with multi-agency partners to monitor and review data and intelligence on COVID-19 cases, incidents and outbreaks, and to agree and coordinate the activities of the agencies involved to manage the investigation and control of the outbreak.

The approach to data, epidemiology and outbreaks continues to be reviewed and adapted on a regular basis.

SECTION 6: VULNERABLE PEOPLE, PLACES AND SETTINGS AND HEALTH INEQUALITIES

Bespoke planning and response frameworks have been developed for those assessed as complex or of higher risk. These are aligned to the regional Yorkshire and the Humber PHE and Local Authorities Standard Operating Procedures and outline a localised summary of:

- The primary prevention actions for the group, setting or place
- Initial actions to be undertaken in the event of a suspected or confirmed case
- List of proposed MDT members
- Outbreak control measure actions and considerations
- IPC actions and considerations

The framework continues to be developed and strengthened through the IMT. A review will also take place following the activation of one of frameworks and following any significant changes in guidance.

6.1 Health Inequalities

There is clear evidence that COVID-19 does not affect all population groups equally. PHE have published a rapid review, 'Disparities in the risk and outcomes of COVID-19'. This report confirmed that the impact of COVID-19 has replicated existing health inequalities, and in some cases, increased them. A second report focussing on stakeholder views gathered insights into factors that may be influencing the impact of COVID-19 on these group. The report 'Beyond the data: understanding the impact of COVID-19 on BAME groups' contains 7 recommendations. In our local response to COVID-19 we have focussed attention on providing education and prevention resources in suitable formats (see <https://www.doncaster.gov.uk/services/health-wellbeing/coronavirus-easy-read-guides-and-other-language-guides>). We have reflected on this work and recognise there is more to be done. Within our outcome control plan we will specifically work to ensure local implementation of the following PHE recommendation:

'Fund, develop and implement **culturally competent COVID-19 education and prevention campaigns**, working in partnership with local BAME and faith communities to reinforce individual and household risk reduction strategies; rebuild trust with and uptake of routine clinical services; reinforce messages on early identification, testing and diagnosis; and prepare communities to take full advantage of interventions including contact tracing, antibody testing and ultimately vaccine availability.

An Equality Impact Assessment has been undertaken on the outbreak control plan and associated procedures and will be reviewed on a regular basis. An action plan has been developed and is currently being embedding across all areas of response.

Communities and multi-agency locality teams have reviewed communities in relation those more vulnerable to the impacts of covid and have prioritised the higher-risk people, settings or places for monitoring, visibility and action/support. These are held by the locality cell leads and regularly inform IMT discussions.

6.1.1 COVID community link team

A COVID community link team of 5 has been established, with recruitment to a further post currently underway. This team is embedded in the public health covid core team and works with colleagues across the partnership to drive the EQIA recommendations and reduce inequalities associated with the pandemic.

6.2 Identification and support for vulnerable people

Throughout the pandemic, significant work has been undertaken to ensure that vulnerable people are identified and supported when this is required through the community hub and the communities cell. Arrangements are now in place through localities cells, locality MDTs and the local voluntary, community and faith sector groups to ensure that support remains accessible for vulnerable residents and those needing to self-isolate that cannot get support elsewhere.

This includes establishing, supporting and signposting to wider support networks.

6.2.1 Enabling and supporting self-isolation

A range of support is currently in place to support people to self-isolate.

Residents required to self-isolate are directed to the Council's [self-isolation support payment webpage](#) which outlines the application process for both the national payment scheme and the local discretionary payments. Those requiring further assistance in applying are also signposted to contact the team via email at isolation.payments@doncaster.gov.uk, or by telephone on 01302 735336 (option 1).

There is a wide range of support in place across the borough to support residents in self-isolating and throughout the pandemic in general. This is outlined for members of the public on a dedicated [webpage](#). This includes:

- Detail of the local support helpline for clinically extremely vulnerable, available Monday to Friday between 8.30am – 5pm on 01302 430300
- Support available through the Doncaster social isolation and loneliness alliance covering a range of emotional, wellbeing and practical support, accessible seven days a week Monday to Friday from 8am to 8pm and Saturday and Sunday 8am to 6pm on 01302 430322
- Signposting to mental health and wellbeing support
- Signposting to a range of practical support including food banks and access to essential services

Individuals identified as requiring support through local contact tracing or welfare calls will be referred for support to the relevant locality team single point of contact emails.

The approach is reviewed and adapted regularly and work is currently ongoing to review the humanitarian support and the interdependencies across testing, tracing and isolation to ensure support to local residents continues as the current shielding period ends and restrictions start to be lifted.

6.2.2 Tailoring and targeting communications

Throughout the pandemic, a proactive approach to contacting and supporting the most vulnerable has been adopted:

- Proactive calls to those registered as clinically extremely vulnerable to ensure key advice and support is in place continue although some challenges remain;
- Welfare calls to those residents identified through line list meetings as potentially requiring additional support continue;
- A dedicated BAME communications plan is in place with Team Doncaster partners to ensure accessible and targeted key messages are available in a range of formats and languages;
- The planning and response framework also summarises some bespoke prevention work to support reducing risk and transmission in populations such as homeless and complex lives cohorts, Roma communities, places of worship and asylum seeker populations amongst others.

All communications activity is coordinated with Team Doncaster partners and continues to be developed in line with new guidance, best practice and intelligence along with the activities summarised above.

SECTION 7: OUTBREAK MANAGEMENT PROTOCOLS

The broad outbreak management approach is based on Standard Operating Procedures developed with PHE YH and Local Authorities across the region and embedded in a locality model in Doncaster, allowing for local arrangements and priorities to be incorporated.

In Doncaster, a partnership and locality approach has been adopted to develop a local planning and response framework of prevention and response. This framework provides a summary of key response and control measures and outlines some of the local partners and specialist expertise that are essential to effective outbreak management in specific settings.

These are aligned to the regional Yorkshire and the Humber PHE and Local Authorities Standard Operating Procedures described in [section 7.1](#).

7.1 Yorkshire and the Humber PHE and LA Joint Working Arrangements for local responses to COVID-19 for specific settings

Regional Joint Working Arrangements are in place between Public Health England Yorkshire and the Humber and local systems outlining the key processes and considerations for responding to confirmed cases of COVID-19 in specific settings or communities, with the aim of reducing transmission, protecting the most vulnerable and preventing an increased demand on healthcare resource. These are available for settings/communities such as care homes, education settings, health and care settings, workplaces, communities of interest, vulnerable residential settings, prisons and airports.

All are based on common principles including:

- Joint working and whole system approach
- Consistency in approach across settings and local systems
- Build on what works using existing and newly developed outbreak plans
- Develop clear roles and responsibilities

7.2 National Action Cards

A number of nationally developed action cards for a range of sectors, settings and venues are available online for sector/setting/venue use. These outline initial outbreak management actions that should be undertaken to contain any potential outbreaks including symptoms and testing, initial contact tracing, key guidance links and when to inform their PHE Health Protection Team. Local information has been circulated on how to inform the most appropriate local authority team for advice and support.

The national action cards available cover categories such as small and large gatherings – workplace, residential workplace, consumer workplace, commercial workplace, education, food and drink, industrial workplace, institutions and travel.

7.3 Local Outbreak Planning and Response Framework

Bespoke planning and response frameworks have been developed for those assessed as complex or of higher risk. These are aligned to the regional Yorkshire and the Humber PHE and Local Authorities Standard Operating Procedures and outline a localised summary of:

- The primary prevention actions for the group, setting or place
- Initial actions to be undertaken in the event of a suspected or confirmed case
- List of proposed MDT members
- Outbreak control measure actions and considerations
- IPC actions and considerations

The Framework covers a range of themes including, but not limited to:

- Care homes
- Homeless and rough sleepers (including commissioned and non-commissioned supported housing)

- Businesses and workplaces
- Public realm (including town centres, high-footfall areas, shop areas etc.)
- Domiciliary Care
- Childcare and Education Settings
- BAME populations
- Roma Communities
- Gypsy and Traveller communities
- Places of Worship
- Areas with high vulnerable or shielding populations
- People who are drug and/or alcohol dependent in residential settings
- Asylum Seeker population
- Supported living
- Day centres
- Children's residential settings.

The framework continues to be developed and strengthened through the IMT. A review will also take place following the activation of one of frameworks and following any significant changes in guidance.

7.3 Incident and Outbreak Monitoring and Escalation

7.3.1 Local outbreak monitoring and escalation

In developing this Outbreak Plan we have identified levels of Outbreak alerts for the system from 1 to 3. This plan is designed to cope with Level 1 and 2 Outbreaks. Level 3 would essentially be a forerunner of a subsequent wave of the Pandemic which would require a greater scale of response. The levels of alert are shown below.

Level	Characteristics	Recent Examples
1	<ul style="list-style-type: none"> • Outbreaks within existing capacity, even if in multiple settings simultaneously. The COVID Control Board would manage these 	<ul style="list-style-type: none"> • COVID 19 in Care Homes and Schools
2	<ul style="list-style-type: none"> • Outbreaks which exceed existing outbreak management capacity and need additional resource or capacity. The COVID control Board and Team Doncaster Gold would work together 	<ul style="list-style-type: none"> • Lookback exercises and screening on over 1500 people (multi agency response)
3	<ul style="list-style-type: none"> • Outbreaks which exceed existing capacity and require the mutual aid of one or more partners e.g. PHE or 	<ul style="list-style-type: none"> • Flu' Season 2017

	LRF and/or one or more partners to declare a Major Incident	
4 (Subsequent Wave)	<ul style="list-style-type: none"> A subsequent wave of infection as bad or worse than the first which requires full scale SCG Co-ordination and National Response. 	<ul style="list-style-type: none"> COVID first wave

Definitions

The definitions of outbreaks and incidents being used in to monitor incidents and outbreaks through Doncaster's IMT are:

- Incident, including PHE definitions: Exposure - single case in a care home, or, Issue - single case in another settings (e.g. workplace)
- (C) Cluster - two or more cases with possible, but not yet confirmed, epidemiological link
- (O) Outbreak - two or more cases linked in time and place

7.3.2 Criteria for escalation to IMT

Whilst all suspected and positive cases are recorded and monitored through established data processes, the development of criteria for escalation to IMT for more detailed review and consideration has also been embedded. These consider factors such as the type of setting, community transmission, vulnerable people and level of risk. These are also regularly reviewed.

7.4 Local outbreak management close down criteria and actions

The Doncaster Incident Management team has agreed that an incident or outbreak will be tentatively closed after 14 days since the onset of illness in the most recently developed case in line with known incubation periods of covid-19. This incident or outbreak will then be subject for ongoing monitoring and be re-opened when there is a new case that is linked up to 28 days after the onset of the most recently developed case. This is line with PHE guidance that incidents and outbreaks will be formally closed after 28 days in all settings.

Agreed actions following the close down of an incident or outbreak by the incident management team include:

- To re-open if further cases arise within 28 days of the onset of the most recently developed case
- If cases return as negative, undertake a review of 'what if' scenarios to review processes
- Undertake a review of the incident/outbreak management process
- Update of relevant plans and planning and response framework
- Consider a 'close down' call with the setting (e.g. school) to determine any further support requirements and review of the incident or outbreak

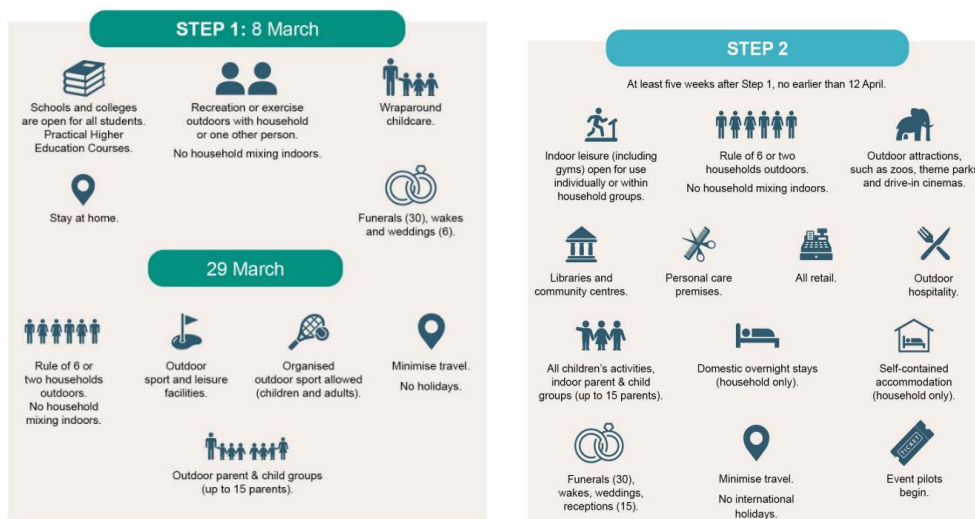
SECTION 8: NATIONAL RESTRICTIONS AND ROADMAP IMPLICATIONS

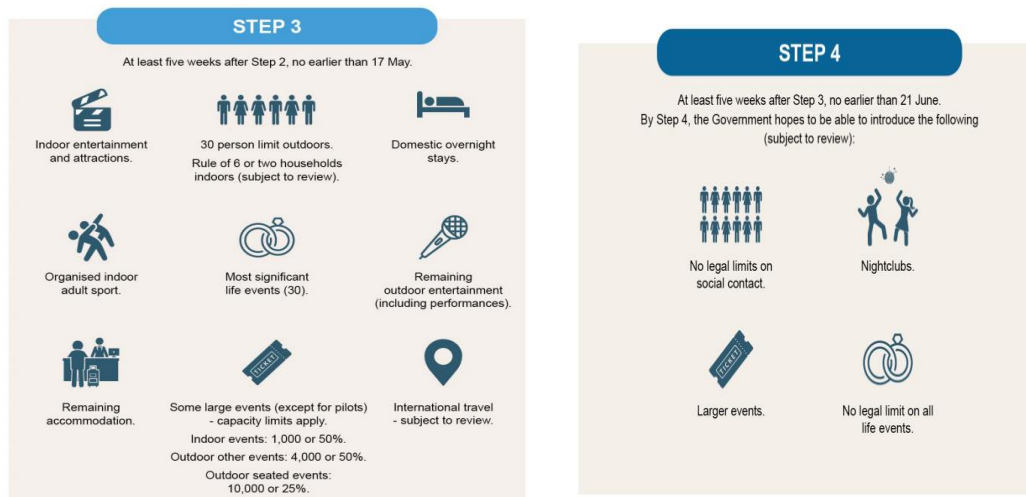
8.1 Roadmap overview

In February 2021, Government announced the [COVID-19 response – spring 2021](#), which included detail on the ‘roadmap’ out of national restrictions in England. The document outlines a 4 step approach to the lifting of restrictions across the country. The move to each step is dependent on 4 key tests set out by Government:

1. The vaccine deployment programme continues successfully.
2. Evidence shows vaccines are sufficiently effective in reducing hospitalisations and deaths in those vaccinated.
3. Infection rates do not risk a surge in hospitalisations which would put unsustainable pressure on the NHS.
4. Our assessment of the risks is not fundamentally changed by new Variants of Concern.

The 4 step approach to the lifting of restrictions, along with the earliest date they may be achieved are summarised in the infographics below:





8.2 Local response to roadmap

The move to each new step will be supported locally through targeted communication and engagement, along with support and advice to venues, settings and buildings re-opening.

This is also accompanied by a comprehensive review of the current locality approach to cases, clusters and outbreaks and a review of the planning and response framework outlining prevention and outbreak control measures for higher risk settings, places and communities.

Throughout this period, incidents, clusters and outbreaks will continue to be managed through the Incident Management Team. Rates of transmission in the borough as a whole and at a community level will continue to be monitored through the Incident Management Team and associated groups and cells.

8.3 Covid-safe reopening

Colleagues across Team Doncaster and the SYLRF Compliance and Regulation cell are currently reviewing the approaches and local impacts in response to the timescales for re-opening of various sectors outlined in the roadmap and as guidance and regulations are published. This includes planning for and considering the impact of re-openings such as indoor and outdoor gatherings, businesses and hospitality.

Local businesses and communities continue to be made aware of both national and local programmes for accessing lateral flow testing to identify asymptomatic cases and support them to self-isolate to help reduce transmission as sectors reopen.

Team Doncaster partners also continue to work together to support residents, businesses and groups to follow Covid safe guidance and practices such as handwashing, physical distancing and the wearing of face coverings in appropriate environments through the partnership's communication plan.

Processes are also in place to be able to respond to local intelligence on high-footfall areas, non-compliance or other concerns which aim to further embed safe practices at all levels. If required and supportive measures fail to have an impact, escalation routes are in place to review enforcement options.

8.4 Health Protection (Coronavirus, Restrictions) (England) (No.3) Regulations 2020

New powers came into force on 18 July allowing local authorities to act to respond to a serious and imminent threat to public health and to prevent COVID-19 ("coronavirus") transmission in a local authority's area. The measures taken must be necessary and proportionate to manage the spread of coronavirus in the local authority's area. These regulations include powers for local authorities to:

- restrict access to, or close, individual premises
- prohibit certain events (or types of event) from taking place
- restrict access to, or close, public outdoor places (or types of outdoor public places)

8.5 National Guidance updates

Throughout the pandemic, national guidance, restrictions and public advice has been subject to regular change. Any national guidance changes and updates will be reviewed at the time of issue and factored into planning and response.

SECTION 9: ENDURING TRANSMISSION AND 'LIVING WITH COVID'

As we shift to a new phase of the pandemic, the local approach is also being reviewed and adapted to ensure a focus on both recovery and ongoing response. Focus is directed by threat and risk assessments that are reviewed on a weekly basis and informed by a range of data and intelligence.

The incident management team continues to meet on a daily basis to review data, intelligence and current incidents, outbreaks and clusters and the covid control board continues on a fortnightly basis to review the strategic picture across the borough. These ensure that as any increase in cases, or areas of concern, are identified they can be escalated quickly and prevention and/or response activity can be scaled up in a timely fashion. Alongside this, the current thresholds for escalation are in the process of being reviewed to ensure that action can be taken in a more proactive fashion going forward.

This is also accompanied by a comprehensive review of the current locality approach to cases, clusters and outbreaks, focussing on 6 key areas:

Area		Support
Safe Practices	Let's Do It For Doncaster 'Hands, Face and Space' Targeted education/ social distance measures	Communications All staff
Secure Premises	Support settings to open safely and stay open: Statutory services Community venues Business Private dwellings	Relevant provider Public Health Environmental Health SYP
Strengthen Protection	Visibility Plan Increase vaccination uptake Community Champions Setting Specific Frameworks	Communities Public Health Bronze chair and Public Health
Spot Disease	Encourage and provide access to Testing Symptomatic Testing Asymptomatic Testing	Public Health
Stop Spread	Localised contact tracing support including home visits	Public Health/customer services
Support People	Ongoing humanitarian support to enable self-isolation for those requiring it Support for CEV Psychological Support	Communities/Public Health/VCSE and Faith sector

This will support a targeted and prevention-focused approach of working with communities with the aim of achieving and maintaining low levels of transmission.

The planning and response framework outlining prevention and outbreak control measures for higher risk settings, places and communities is also under review to further embed this approach.

9.1 Enduring transmission – social networks

In some places, transmission has continued (enduring transmission) and infection rates remain high, above the national average, for longer periods of time. This transmission is often linked to more

mobile, younger and economically active populations who cannot work from home or are in 'high contact' occupations. These groups are less easy to define geographically and may be best identified through social networks. They may also have lower engagement with testing and/or compliance with contact tracing and self-isolation requirements where a person is fearful of losing a job or income or where the test and trace rules are not fully understood.

The Daily Incident Management Team will seek to identify social networks that have high rates of disease and interrupt further onward transmission through better understanding of how people currently live their lives and who and when they interact with other people. This will involve learning lesson from community outbreaks and clusters where chains of infection cross setting boundaries e.g. prisons, care homes, schools and workplaces. The actions taken could include but are not limited to additional testing, work across settings, increasing vaccination uptake and specific communication campaigns. In addition, backwards contact tracing is used to gain a narrative and understanding of local behaviours and activity.

Understanding from national research shows that there is not a single silver bullet to prevent enduring transmission as many factors contribute to it. Therefore, this holistic approach aims to target enduring transmission in a multifaceted manner. Patterns of infections are seen where one household member has tested positive and many other household members have subsequently tested positive. The ability to self-isolate, as recommended, away from other household members is challenging in overcrowded accommodation or where there are household members that require hands on care and support, for example younger children or more frail family members.

Measures that are being taken:

- Updating and refocussing communication campaigns, using behavioural insights through community leaders and workplaces around each of the measures that reduce transmission in workplaces and private homes.
- Enhanced support provided to workplaces, engaging at the earliest stages of outbreaks to ensure workplaces understand the value of quality contact tracing and ensure that risk assessments and working practices are optimal. Developing a programme of 'Hot Spot' visits with the HSE.
- Continuing to provide additional support for self-isolation, tailored at individuals and families. This offer supports people to access self-isolation grants and resolve practical barriers to self-isolation.
- Shared learning from outbreaks with workplaces, care homes and other high-risk settings.
- Gaining insight into behaviours of local communities which can then be addressed with additional support or communication campaigns through Local 0 contact tracing and the work of the community connectors.
- Ensuring equitable access to the tools required to reduce the impact of the pandemic such as symptomatic and symptomatic testing.
- Supporting organisations such as schools, care homes and workplaces to encourage a normalisation of COVID-19 isolation and testing and empower individuals to make the right choices through these settings by allowing people to take time of sick and supporting people to work from home.

SECTION 10: VARIANTS OF CONCERN AND SURGE CAPACITY

A plan is in development for surge testing in the event that it is required following the identification of variants of concern in Doncaster. This provides a scalable framework to target specific postcode areas and considers logistical solutions, staffing resources and redeployment and considerations to support uptake and engagement in communities depending on demographics and local intelligence.

As further information is received on the national option for posting of kits to specific postcodes, this will also be built into local planning.

There is surge capacity within our local contact tracing team which will enable a swift response to any increase in cases or any proactive calls that need to be made which will link directly into support required for self-isolation or access to testing.

Any variants of concern identified will be escalated to the daily incident management team which will directly task locality bronze groups and wider teams to undertake required investigation or mitigation actions.

SECTION 11: CONTACT TRACING

11.1 What is contact tracing?

The process of identifying the contacts of people who have confirmed or suspected infection. These contacts are then advised or required to take certain actions, such as self-isolation, with the aim of interrupting the onward transmission of communicable diseases.

11.2 Definition of 'a contact'

Government [guidance for contacts of people with possible or confirmed coronavirus infection](#), defines a contact as a person who has been close to someone who has tested positive for COVID-19 anytime from 2 days before the person who tested positive developed their symptoms (or, if they did not have any symptoms, from 2 days before the date their positive test was taken), and up to 10 days after, as this is when they can pass the infection on to others. A risk assessment may be undertaken to determine this, but a contact can be:

- anyone who lives in the same household as another person who has COVID-19 symptoms or has tested positive for COVID-19
- anyone who has had any of the following types of contact with someone who has tested positive for COVID-19:
 - face-to-face contact including being coughed on or having a face-to-face conversation within one metre
 - been within one metre for one minute or longer without face-to-face contact
 - been within 2 metres of someone for more than 15 minutes (either as a one-off contact, or added up together over one day)
- travelled in the same vehicle or a plane

- Support bubbles (A support network which links 2 households). Those in a support bubble can have close contact with others in their bubble as if they were members of their own household.

An interaction through a Perspex (or equivalent) screen with someone who has tested positive for COVID-19 is not usually considered to be a contact, as long as there has been no other contact such as those in the list above.

11.3 Contacts who are health and care staff

A staff member who has been caring for a person who has tested positive for COVID-19 or who has symptoms of COVID-19 while the staff member was wearing appropriate PPE will not automatically be asked to self-isolate. Such cases will be escalated to the PHE HPT to offer advice, which will usually be that they are able to continue to work as normal.

There are however some circumstances that the member of staff will need to isolate for 10 days in line with advice to the general population. These are:

- A staff member who has been caring for a person who has tested positive for COVID-19 or who has symptoms of COVID-19 whilst wearing PPE, but the PPE has been breached;
- A staff member who has been in contact with anybody else who has tested positive for COVID-19 whether at work (e.g. a colleague in communal areas) or in the community.

11.4 NHS Test and Trace Programme

The national NHS test and trace service has been set up to:

- ensure that anyone who develops symptoms of coronavirus (COVID-19) can quickly be tested to find out if they have the virus, and also includes targeted asymptomatic testing of NHS and social care staff and care home residents
- help trace close recent contacts of anyone who tests positive for coronavirus and, if necessary, notifies them that they must self-isolate at home to help stop the spread of the virus.

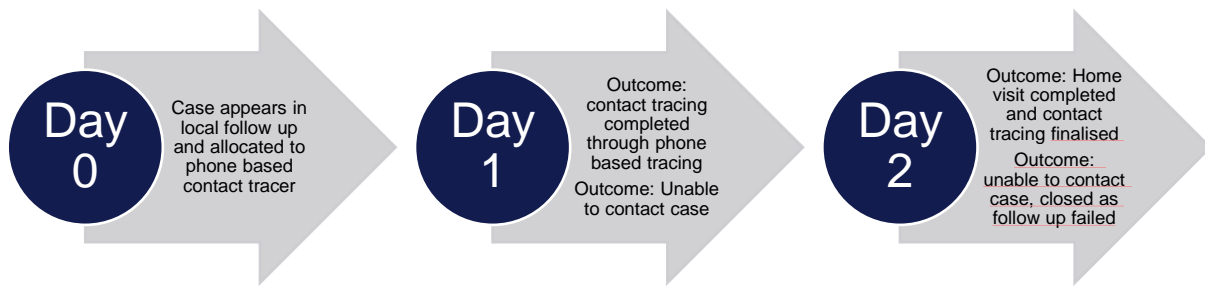
Currently, cases deemed complex or are within certain settings are escalated to 'Tier 1' within the Yorkshire and the Humber Public Health England Health Protection Team.

11.5 Local contact tracing

From 4th December 2020, a local tracing partnership was formed with the National Test and Trace team to support with the engagement and completion of contact tracing. Local cases that have not completed contact tracing within 24 hours following a positive test result and invitation to complete the online questionnaire are re-allocated for local follow up.

A core team of staff from Public Health and a pool of bank staff from within Doncaster Council undertake contact tracing. In order to monitor cases and outcomes, a dedicated local case management system has been developed and quality assurance is in place. In some cases, other teams and colleagues facilitate and support local contact tracing activity, including in settings where an existing relationship and trust with those being contact traced is beneficial.

The period between symptoms onset, testing and contact tracing is critical; a delay at any stage can impact on the potential for further transmission. To mitigate this, a performance monitoring and target of 48 hours has been adopted locally; 24 hours to complete contact tracing via telephone, and a further 24 hours to complete contact tracing through home visits.



A small team of staff within customer services carry out welfare calls to all cases across the borough identified as clinically extremely vulnerable, elderly or where a request for local support through the contact tracing questionnaire has been made. The purpose of the welfare calls are to offer advice and support to individuals and their household to isolate effectively and where required refer or signpost to national and local services for additional support.

11.6 Local resource and training

Contact tracers are required to complete a number of specific mandatory training courses in relation to both the national and local system. Local training resources and packages for contact tracing have been adapted and are reviewed on a regular basis to reflect changing guidance.

Capacity within the Local contact tracing team was increased in October 2020 to meet the demands of the Local Tracing Partnership and the increasing numbers of cases at that time. This included a rise in the number of staff trained within Public Health, COVID core team, bank staff and customer services.

Capacity within the local contact tracing team continues to be monitored and responded to as the number of cases fall and rise.

11.7 Monitoring effectiveness

Effectiveness of contact tracing is reviewed on a regular basis through the daily Incident Management Team meetings and reviews of incidents and/or outbreaks. Regular contact, training updates and support is provided to the contract tracing team through the Outbreak Control Trace and Support MS teams channel process which is subject to quality assurance and supervision support from the COVID Coordinators within the core team.

SECTION 12: TESTING FOR COVID-19

12.1 Testing overview

A comprehensive COVID-19 testing plan has been developed and is being managed through the Testing and IPC task and finish group, chaired locally by the Doncaster Council Consultant in Public Health. This agenda enables discussion on access through Pillar 1 using local lab capacity, community testing and wider testing updates.

An overarching Doncaster COVID Testing Strategy is also in place, which aligns to the objectives of this COVID control plan.

There are a wide range of testing approaches outlined in the table below. Further detail is outlined in the following sections. However, the simplest split is between testing in those who have one of the 3 clinical symptoms of COVID-19 (new and continuous cough, high temperature and a change of/or loss of sense of taste or smell) so called symptomatic testing and testing in people who don't display one of the 3 clinical symptoms known as asymptomatic testing.

Symptomatic / asymptomatic	Test type	Setting / cohort	Additional information
Asymptomatic	LFD	NHS staff	Testing of asymptomatic patient-facing NHS staff across all trusts including ambulance, mental health and community trusts; national programme
Asymptomatic	LFD/PCR	Adult social care	Regular testing of: <ul style="list-style-type: none"> • Staff and care home residents • Visitors including visiting professionals • National programme
Asymptomatic	LFD	Schools and colleges	Testing of staff and students through: <ul style="list-style-type: none"> • On-site asymptomatic testing sites • Home testing kits Private nurseries access to home testing is due to be live shortly.
Asymptomatic	LFD	Schools and colleges (bubbles)	Collection of home testing kits for all families and households with primary, secondary school and college aged children and young people, including childcare and support bubbles <ul style="list-style-type: none"> • Local Testing Site – Chappell Drive (13:30 – 19:00) • Regional Testing Site – Doncaster Sheffield Airport (13:30 – 19:00) Further local collection sites at the following community testing sites from 22.03.21: <ul style="list-style-type: none"> • Conisbrough • Mary Woollett Centre • Stainforth
Asymptomatic	LFD	Workplaces (private and public sector)	On-site asymptomatic testing site options for workplaces. Business locally have been encouraged to site up via the national webpage .

			If business are unable to set up their own testing they can access the Community Testing Sites at Hexthorpe, Stainforth and Conisbrough.
Asymptomatic	LFD	Key workers	Regular testing for workers who are unable to work from home from across Doncaster is now underway either at the Community Testing sites or a booking system is available for Mary Woollett Centre by invitation.
Asymptomatic	LFD	Doncaster Council staff	Regular testing for Doncaster Council staff unable to work from home is available at any of the community testing sites, by pre-booked appointments at Mary Wollett Centre or at North Bridge Depot on a drop-in basis.
Asymptomatic	LFD	Community testing	<p>People living and working in communities, do not have access to asymptomatic testing through other routes, and do not have symptoms of the virus, are encouraged to attend for regular testing.</p> <p>A mobile testing van is also available at various locations to support access to testing across the borough.</p> <p>Locations and times can be found at: https://www.doncaster.gov.uk/services/health-wellbeing/covid19-testing</p>
Asymptomatic	LFD	Home testing	Home Test Kits are now available for everyone and details on where to get them can be accessed here
Asymptomatic	LFD	Targeted cohort testing (e.g. homeless)	Targeted asymptomatic testing for specific cohorts, deploying a mobile testing van to locations to support access and uptake. Tests are processed on site.
Symptomatic	PCR	Symptomatic testing – whole population	<p>Testing for those with symptoms booked via the national booking portal or 119. Currently available via:</p> <ul style="list-style-type: none"> • Regional Testing site – Doncaster Sheffield Airport • Mobile Testing unit – Park and Ride North, Adwick • Local Testing site – Chappell Drive East Car Park, Town Centre • Local Testing site – Bridge Street Car Park, Thorne • Home testing kits
Symptomatic	PCR	NHS testing – symptomatic patients & testing asymptomatic staff (pillar 1)	<p>Testing options for:</p> <ul style="list-style-type: none"> • Symptomatic patients • Some limited testing of asymptomatic DBTH staff at DRI • Symptomatic primary care staff (GP practice, pharmacy, Optometrists, dentists, etc.) • Symptomatic acute staff.

Symptomatic	PCR	Pillar 1 – Key worker testing	Testing option for key workers struggling to access Pillar 2 tests where absence will have a significant impact on business continuity. Requested/booked via: Key workers via: https://www.doncaster.gov.uk/covid19testrequest
Symptomatic	PCR	Pillar 1 - outbreak management support	Testing to support local outbreak managements as advised by public health to be arranged directly with the DRI lab. This usually involves the collection and return of swabs by identified setting staff. Option is dependent on lab capacity.
Symptomatic	PCR	Pillar 2 – outbreak management support	A mobile testing unit Doncaster deployment plan is in place, which outlines key contact information to ensure the safe and efficient deployment of MTUs locally. It also outlines the key considerations that need to be made including specific site requirements, welfare requirements, traffic management plans, communication arrangements and site handover requirements.

12.2 Testing strategy objectives

There are 5 core objectives for testing in Doncaster:

1. Control transmission
2. Monitor incidence and Trends and assess severity over time
3. Mitigate the impact of COVID-19 in health care and social care settings
4. Rapidly identify all clusters or outbreaks in specific settings
5. Prevent (re-)introduction into Doncaster where sustained control has been achieved

12.3 Communication and engagement for local testing options

With most local testing sites and mobile testing units, the responsibility of the communication and engagement approach lies with the local authority. As the focus of these testing options is that they will be accessible to local communities and established to receive walk-ups without booking, a number of key considerations will be made when agreeing the approach which may differ slightly depending on the particular community being targeted:

- Promotion of testing sites/options (if distributing tests in community) through accessible and appropriate formats (considering offline promotion, appropriate language and phrasing)
- Engagement through local, trusted community figures
- Clear and simple signage
- Staff visibility to sign-post and support filling in forms where applicable

A testing communications plan is in place and monitored through the large scale testing programme group.

12.4 Increasing capacity and utilisation

The testing plan outlines arrangements for increasing testing capacity locally through local health systems and local laboratories. Mutual aid arrangements are also in place for this.

Testing has been one of the areas of focus of Doncaster's COVID Communications Campaign. In addition there is a weekly communications meeting to discuss the strategy for encouraging and supporting residents to easily access testing. All information is regularly updated at <https://www.doncaster.gov.uk/services/health-wellbeing/covid19-testing>

SECTION 13: VACCINATION

13.1 Vaccination programme overview

Vaccination is an important means of primary prevention, providing a level of acquired immunity in the individual. Through community (herd) immunity, vaccination also protects susceptible individuals within a population once a minimum level of coverage has been achieved.

A borough wide vaccination is currently underway and being supported across the Team Doncaster partnership. Further information can be found on the [NHS Doncaster CCG website](#) including information on priority groups and how people will be invited for their vaccination.

SECTION 14: COMMUNICATIONS AND ENGAGEMENT

Communications and engagement plans are in place with Team Doncaster partners. A Doncaster COVID-19 communications cell is in place involving the partners.

Team Doncaster's COVID communications strategy continues to focus on three key areas

- **Inform** – make sure that people are up to date with the latest situation locally and exactly what it means for them personally. Strong information, advice and guidance is key to achieving this.
- **Educate** – make sure people understand why any current / rules are important. Try to counteract the streams of misinformation but ensuring all communications are not only useful but offer facts and explanations as required.
- **Inspire** – as people become increasingly fatigued of restrictions on their way of life it is getting even harder to inspire true behaviour change and adherence. Communications alone can't achieve true behaviour change but it plays a very important role alongside other key services.

Throughout all of this an emphasis on non-pharmaceutical interventions will remain.

There remains significant challenges that the communications need to take into consideration:

- Lockdown fatigue – as we enter a new year, many people expected to leave ‘2020’ behind – to be back in the position with no real feeling of moving on people are starting to feel that the previous sacrifices they made were pointless, making them not feel as inclined to make them again this time.
- Months of financial pressures, distancing from friends and families and general uncertainty has taken its toll on the ‘community spirit’ that was seen in the first lockdown. People are now firmly focused on the effect on them personally
- There is a lot of misinformation and theories around. People are starting to distrust data as they are becoming less sensitive to the daily case and death data it is losing it

Members of the public can feed information on COVID-19 through to PHEnquiries@doncaster.gov.uk

SECTION 15: RESOURCES

Significant resources have been recruited across four main themes to increase capacity across the system:

- Data, intelligence and insight
- Establishment of core team and localities support
- COVID taskforce to provide surge capacity
- Specialist support including infection prevention and control

Training has also been undertaken across a range of teams to support additional capacity that can be scaled up as required.